



## HITCH, 2" Receiver, Hyundai Santa Fe, Kia Sorento INSTALLATION INSTRUCTIONS

### READ ALL WARNINGS AND INSTRUCTIONS THOROUGHLY BEFORE INSTALLATION

**⚠ WARNING:** The manufacturer of your vehicle may specify towing capacities lower than the capacities noted below. Never exceed the vehicle manufacturer's recommended towing capacity. Consult your vehicle's owner's manual for the manufacturer's recommended towing capacity for your specific vehicle.

**⚠ WARNING:** Failure to adhere to the exact torque specifications noted in these installation instructions can result in property damage and/or bodily injury. Failure to follow all specifications and instructions will void the hitch warranty.

### NOTICE:

Always use proper tools and safety equipment to ensure a safe and quality installation. Inspection of the trailer hitch should be performed before and after each use to ensure all mounting hardware is tight and related hitch components are secure.

### LEVEL OF DIFFICULTY: Easy

Installation difficulty levels are based on the time and effort required. They will vary depending on the installer's expertise. Vehicle condition could be a factor in the level of difficulty for a proper installation.

WEIGHT CARRYING CAPACITY	
Gross Trailer Weight (GTWR)	4,500 LBS
Tongue Weight (TW)	675 LBS

WEIGHT DISTRIBUTING CAPACITY
<b>THIS HITCH IS NOT RATED FOR USE AS A WEIGHT DISTRIBUTING HITCH</b>

TOOLS REQUIRED			
SAFETY GLASSES	TORQUE WRENCH	RATCHET	19mm SOCKET
14mm SOCKET	7/16" SOCKET	6" SOCKET EXTENSION	FLAT HEAD SCREWDRIVER
EXHAUST HANGER TOOL	PRYBAR		

### INSTALLATION:

- (Kia Sorento Only)** Remove the plastic underbody panel behind the driver's side rear wheel by removing the five fasteners securing it to the underside of the vehicle. Remove the three plastic push-pins along the outside edge using a flat head screwdriver or plastic trim tool. Remove the two plastic nuts up near the frame rail using the 14mm socket and socket extension. Retain panel and fasteners for reinstallation.
- Lowering the spare tire will provide more working space for installing the hitch. Using a 7/16" socket on the lowering mechanism under the vehicle - OR - using the standard lowering mechanism in the rear storage area inside the vehicle, lower the spare tire and set it aside for reinstallation.
- After supporting the exhaust to prevent damage to the system, lower it by detaching the three rear-most rubber exhaust hangers using a prybar or exhaust hanger removal tool. Spraying the hangers with soapy water will make their removal or reinstallation much easier.
- Locate the three hardware mounting locations with weld nuts on each frame rail: two on the inside face and one on the bottom surface on each frame rails. Remove the rubber/plastic plug from the bottom of each frame rail that is immediately in front of the fastener location. The plugs will not be reinstalled.

*continued on next page*

5. Lift the hitch into position and loosely secure hitch to the vehicle's frame rails with the six M12 hex head bolts (**ITEM 1**) and 1/2" conical toothed washers (**ITEM 2**), making sure that the teeth of the washers are in contact with the mounting flange of the hitch. It may be necessary to trim the center rear fascia tab to eliminate contact with the hitch's cross tube and create adequate clearance. **SEE DETAIL A**

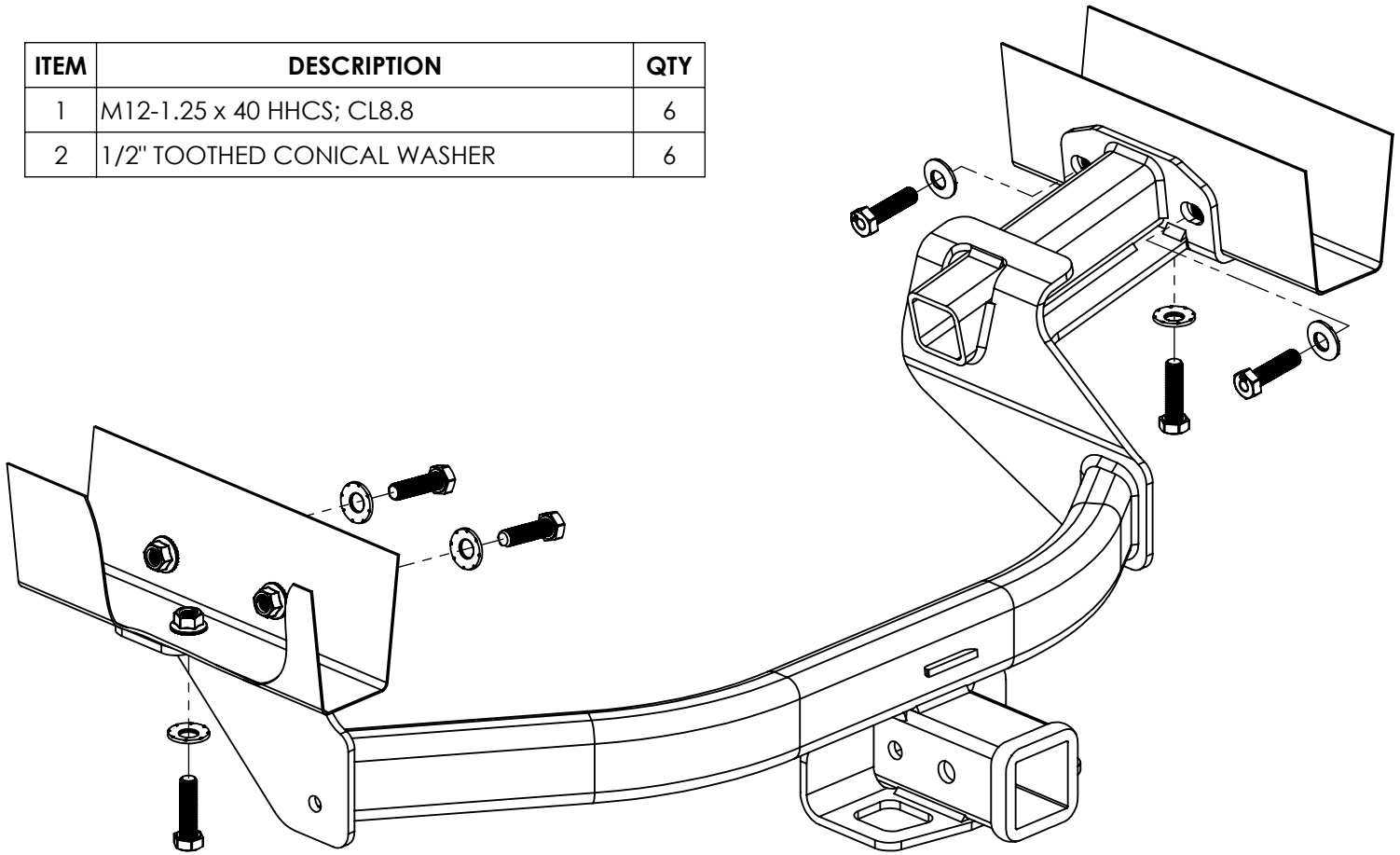
6. The two vertical fasteners should be tightened and properly torqued prior to tightening and torquing the four horizontal fasteners to allow the hitch to properly mate flush with the bottom surface of the frame rails.

**TORQUE ALL M12 FASTENERS TO 60 FT-LB**

7. Raise exhaust back into its correct position and resecure the three rubber exhaust isolators to their respective hangers on the vehicle. It may be necessary to adjust the rear most hanger pin downward using a box end wrench to assure adequate clearance between the exhaust and hitch. Remove all exhaust supports that were used while the exhaust was lowered.

8. Reinstall plastic underbody panel and spare tire removed in STEPS 1 and 2.

ITEM	DESCRIPTION	QTY
1	M12-1.25 x 40 HHCS; CL8.8	6
2	1/2" TOOTHED CONICAL WASHER	6



IT MAY BE NECESSARY  
TO TRIM FASCIA TAB TO  
CREATE CLEARANCE  
WITH HITCH CROSSTUBE

**DETAIL A**

